

# Browsers: Google Chrome, Internet Explorer 8 or 9: Detected as IE7

---

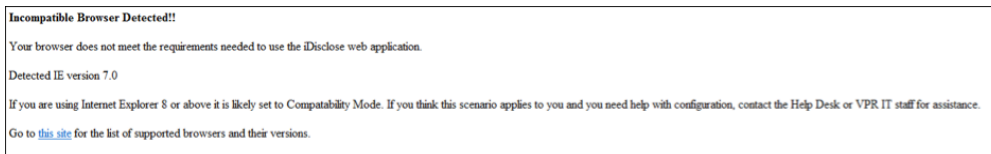
To successfully access iDisclose, [Google Chrome](#) is the recommended browser supported by regulatory and IT support staff. If you need assistance, please contact us at 210-562-5691, or email us at [VPR-IT@uthscsa.edu](mailto:VPR-IT@uthscsa.edu).

Thank you,

Michelle

-----

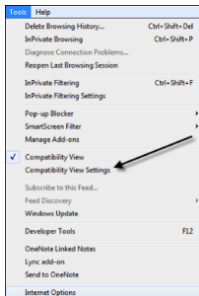
The following error message may be received when accessing the iDisclose website



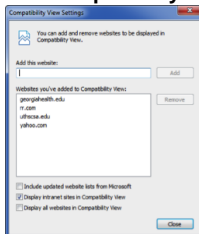
To view iDisclose you will need to make sure IE9 is not set to Compatibility Mode. With this set IE9 emulates IE7. If you have another compatible browser installed such as Chrome, Safari or Firefox, you can access iDisclose without having to change IE9. The choice is yours.

Follow these steps to remove IE7 emulation in IE9:

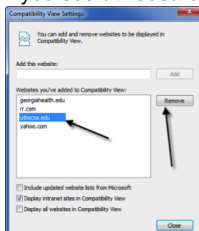
1. Got to the IE9 menu and select **Tools**, then **Compatibility View Settings**



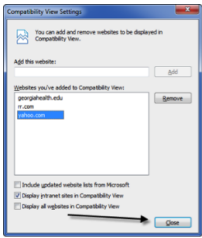
2. The **Compatibility View Settings** will look like this:



3. If you see **uthscsa.edu** in the list, select it and click on the **Remove** button.



4. Click on the **Close** button.



5. The iDisclose website will now be displayed and the system can be accessed. Click on the big green button to start.