

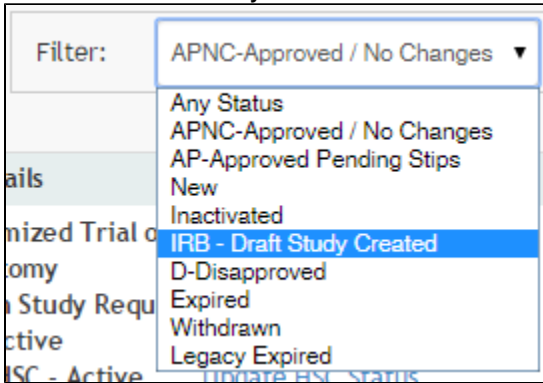
Studies created in Velos/eResearch

O.R.C.A

Q: How do I know a protocol has been created in Velos eResearch?

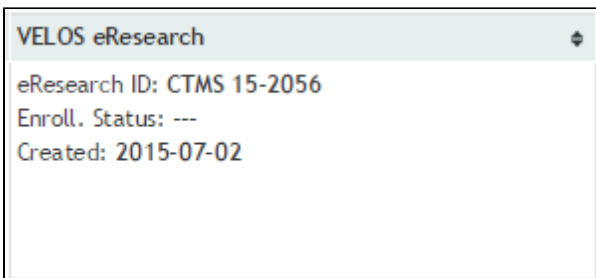
A: When searching through IRB Protocols in ORCA sort by:

- **status - IRB - Draft Study Created**



Q: When a protocol is no longer listed as **IRB - Draft Study Created**, how do I know it was initiated in Velos eResearch?

A: In O.R.C.A, IRB Protocol listing, column Velos eResearch, you will see, **Created: XXXX-XX-XX**



Q: Is there a report that will show me all protocols that were initiated in Velos eResearch?

A: Yes, within O.R.C.A. you will have a new report **IRB Reports**. Click here for more information - [Reports - IRB](#)

PIMS

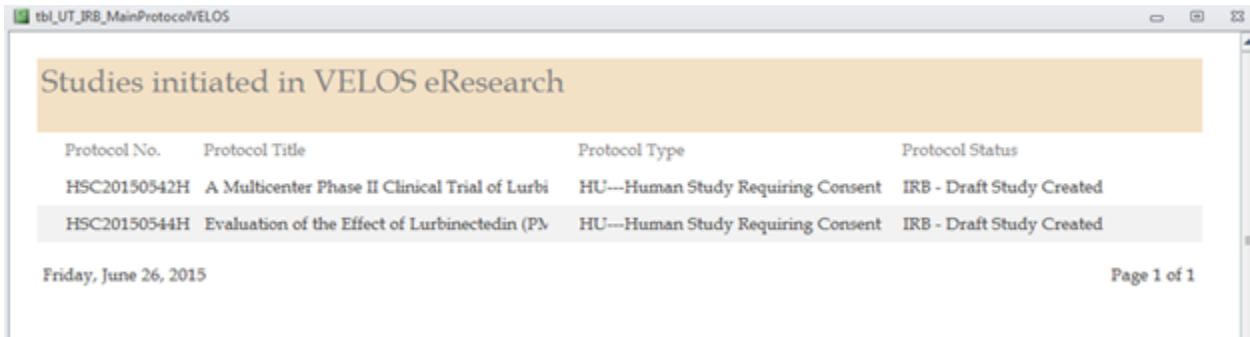
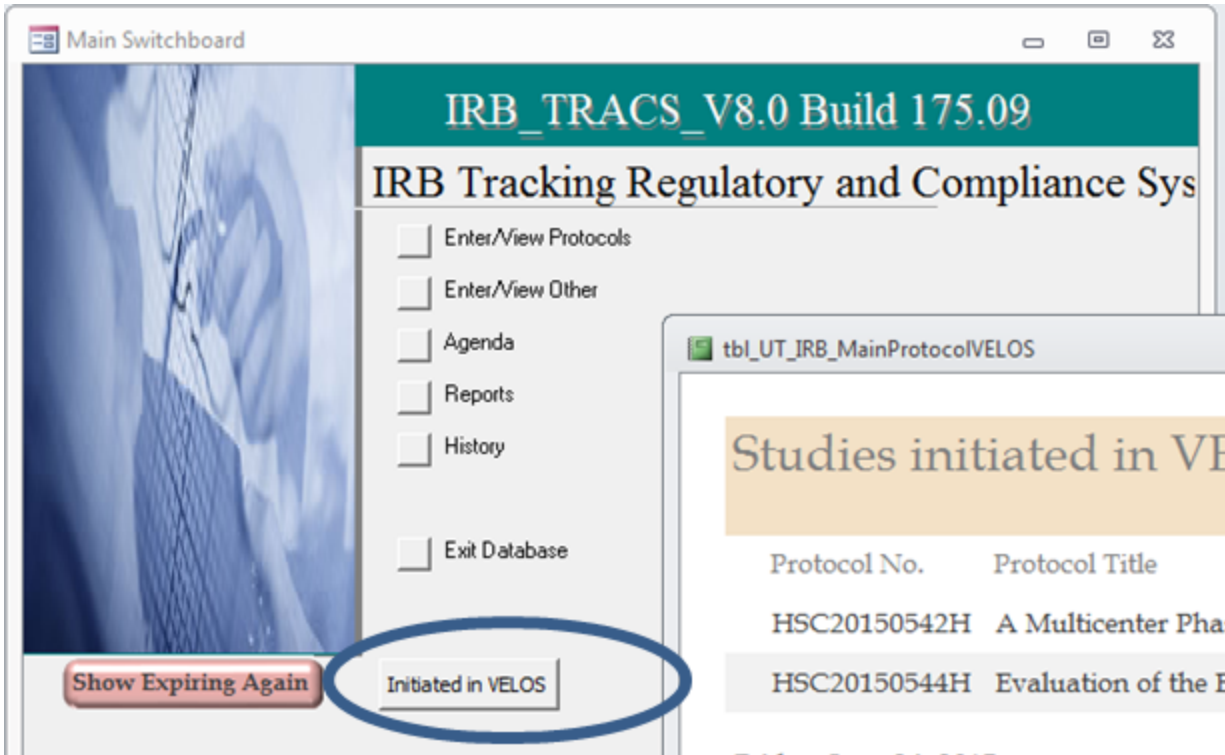
Q: Where in PIMS can I go to view studies that have been created in Velos eResearch?

A: All new studies created in Velos/eResearch will be displayed in a report on the PIMS dashboard. Click the 'Initiated in VELOS' button to view the report. Studies will have a status of **IRB - Draft Study Created**. If you do not see a particular study in the report, close the PIMS database and then reopen so that PIMS can refresh.

. Impact of Velos Research/PIMS Access database interface:

- 1) New studies can be initiated in the Velos eResearch application. New studies created in eResearch will be imported into PIMS overnight.
 - Both PIMS and Velos eResearch will use a common process to generate new protocol numbers. So if you create multiple protocols in PIMS you may notice a gap in the protocol number if a study was also created in eResearch. Nightly the studies started in eResearch will be copied to PIMS filling any gaps in protocol numbers.
 - The status of new studies initiated in Velos eResearch is '**IRB - Draft Study Created**'
 - If creating a new study in PIMS (the IRB Analyst) – '**IRB – Draft Study Created**' will be listed as an available option. *An Analyst should not use this option as it is intended only for when a study is generated in Velos/eResearch.*

2) All new studies created in Velos/eResearch will be displayed in a report on the PIMs dashboard. Click the **'Initiated in VELOS'** button to view the report. If you do not see a particular study in the report, close the PIMs database and then reopen so that PIMs can refresh.



3) Some of the PIMs data fields for Velos initiated studies will be blank such as Investigator name. You can find the Investigator name and Investigator email in the ProtocolTitleMemo field. The Protocol Status will be **'IRB - Draft Study Created'**.

Protocol Number **HSC20150544H** Old Tracking Number Protocol Status **IRB - Draft Study Created**

PI Name (First, Middle Initial, Last) Degrees

ProtocolTitleMemo [Woondong Jeong jeongw@uthscsa.edu] Evaluation of the Effect of Lurbinectedin (PM01183) on Cardiac Repolarization (QTc Duration) in Patients with Selected Solid Tumors (CTMS# 15-2072)

Phone Initial Risk Level: Mailing Address [e.g.: c/o; Dept; Address]
Pager Current Risk Level:
Fax Submission Date:
Email Initial IRB Approval:

Contact Name: Protocol Type: **HU---Human Study Requiring Consent**
Coordinator Email: Dept/Div:

NCT #: Epic Research Account ID Number: Billing Risk:

Date Continuing Review or Final Report Received: Type of Initial IRB Review:
Date of Most Recent Annual Review: Closed To Enrollment:
Date of Continuing Review Due: Date Inactivated:
Regulatory Expiration: ClosedBoxNumber:

Co-PI Name: